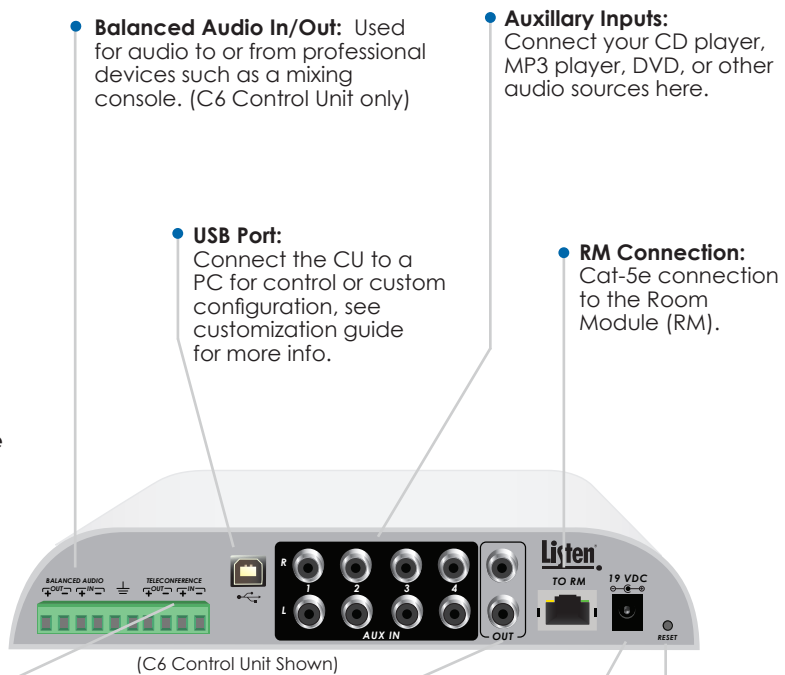
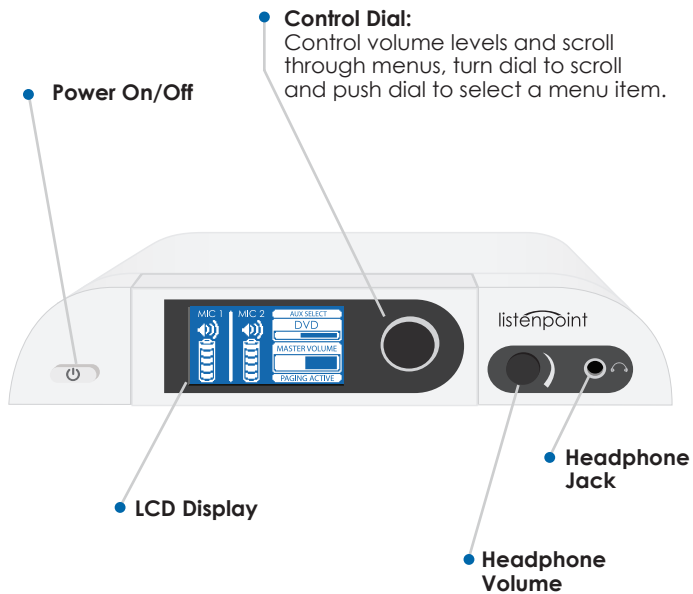


ListenPoint® Control Unit Quick Reference



Teleconferencing In/Out: Connect to VOIP or audio conferencing system, see installation guide for more info. (C6 Control Unit only)

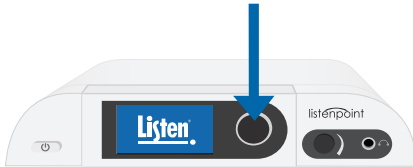
Line Out/ALS Out: Use to send a recording feed or to an Assistive Listening output.

ListenPoint® Customization Quick Reference

Control Unit Customization - Two Ways

Directly on LCD Display on Control Unit:

Press and hold rotary knob to enter customization mode.

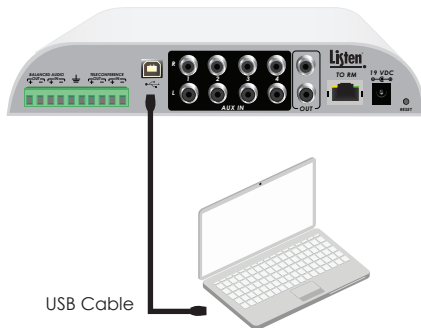


Customization Screen

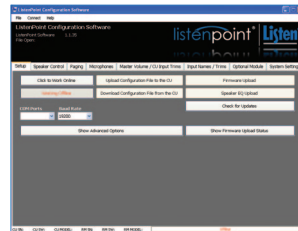


Via ListenPoint Software:

Download ListenPoint Software at:
www.listentech.com/support-tools-downloads

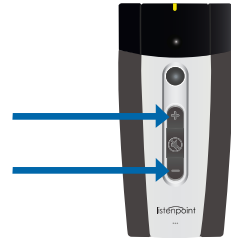


Software Customization Screen



M1 Microphone/Media Interface Customization

For certain M1 customizations, you must simultaneously press the UP and DOWN buttons while the M1 is connected to the ListenPoint system, the yellow LED will flash.



Detailed Customization

For more detailed customization options for both the Control Unit and M1, download the ListenPoint Customization Guide at:

www.listentech.com/support-tools-downloads

or contact Listen at:

+1.801.233.8992 • 1.800.330.0891 North America

The user is cautioned that any changes or modifications not expressly approved by the party responsible for compliance could void the user's authority to operate the equipment.

